

Having trouble reading this email? [View it on your browser.](#) [Unsubscribe Instantly.](#)

Tomoko
Mukaiyama
Foundation x.

Woman in the Dunes



Photo: Tomoko Mukaiyama

For the last week *Women in The Dunes* has been performed for hundreds of attendees at this year's Oerol Festival on Terschelling. The beauty of the island combined with the fellow-feeling from the festival goers has been invigorating.

People come out, perch along the massive dunes, and listen to variations on the music from *Beginning*. The piano sits beneath a silver river of fabric designed by Ting Gong. Like a stream connecting the audience, the performer, and the sea, Gong's installation starts at the top of the dunes, runs over the top of the piano, and winds its way toward the water. The ambient sounds of the sea, the breeze, the wildlife, and even the occasional helicopter mix with piano riffs and the undulations of the silver river, creating conversations between music, sculpture, and the natural world. There are five shows per day. Each show is 20 minutes. And you only have three days left to see it. Come say hi.

10-19 JUN – **Woman in the Dunes** – [Oerol Festival](#), Terschelling (NL)

Music, dance, installation, lights - La Mode in progress



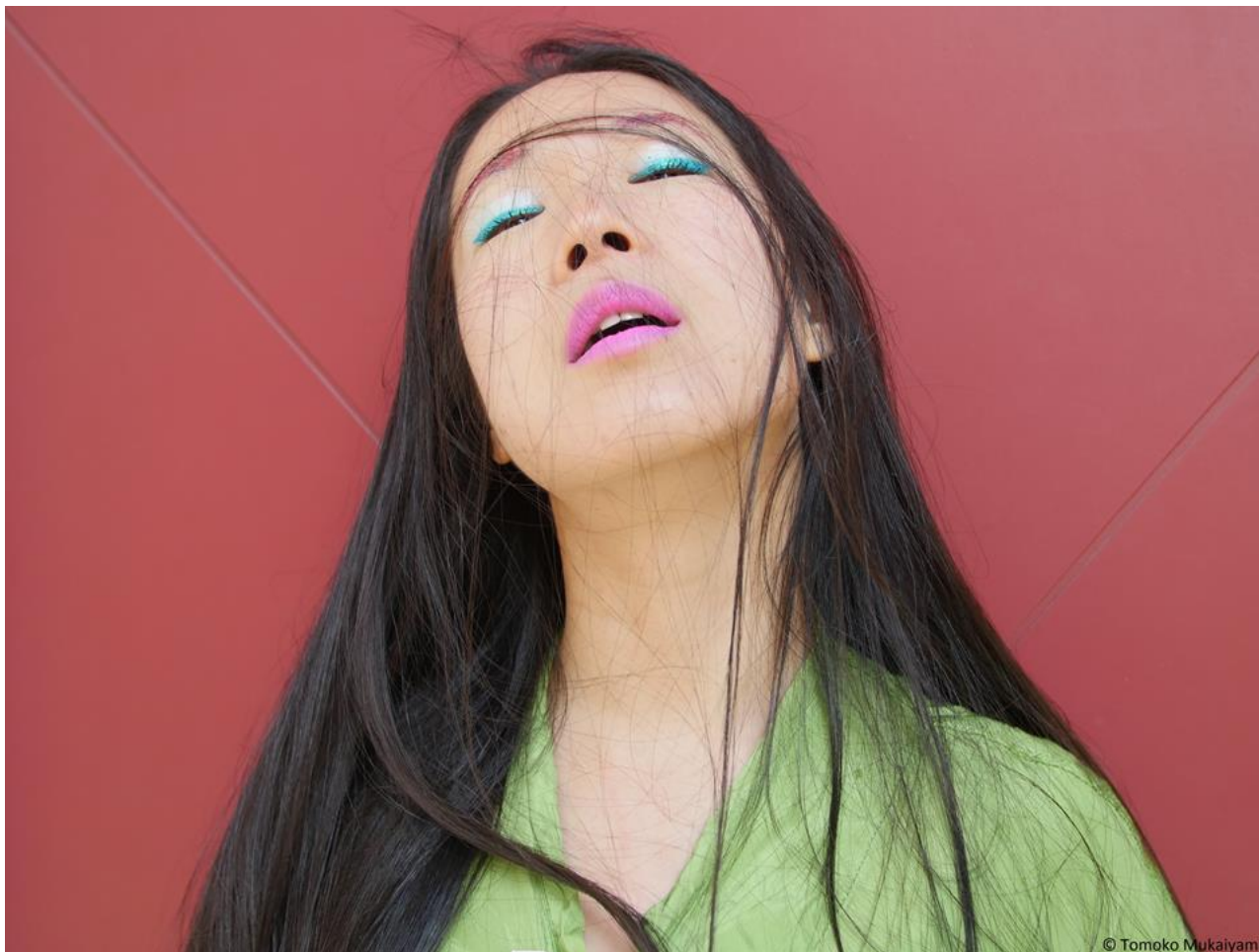
Fabio Cavallo, Spellbound Ballet. Photo by Gregor Khuen Belasi

We're also happy to report that the team just wrapped up an open rehearsal for La Mode in anticipation of the show's upcoming world premier at National Taichung Theater in Taiwan in October. La Mode is an interdisciplinary performance created by a dream-team of international artists. Audience members are surrounded by a gorgeous, surreal stage designed by Toyo Ito & Associates, Architects, textile designer Yoko Ando, lighting designer Tanja Ruehl and LUFTZUG's technical team. The acoustic piano and Yannis Kyriakides's rhythmic electronic music create an immersive soundscape through which dancers from Spellbound, choreographed by Dunja Jovic, strut in clothes designed by Slavna Martinovic. Lines between audience and performer are blurred, as are the lines between the many artistic genres in play.

This project has been in the making for the last three years now, and the open rehearsal in Bolzano, Italy was the first time the whole team came together and worked in the same place. Many ideas were shared and mulled over in that space, but we all left feeling as if we had focused and intensified our vision. We're all especially eager to launch the show at the Taichung Theater, an innovative opera house that explores cross-genre collaboration in an attempt to push art forward.

- 08 SEP – **La Mode** – [Transart](#), Bolzano (IT) pre-premiere
- 01 OCT – **La Mode** – [National Taichung Theater](#), Taichung (TW) world premiere
- 02 OCT – **La Mode** – [National Taichung Theater](#), Taichung (TW)
- 08 OCT – **La Mode** – [Dance New Air](#), Tokyo (JP)
- 09 OCT – **La Mode** – [Dance New Air](#), Tokyo (JP)
- 10 OCT – **La Mode** – [Dance New Air](#), Tokyo (JP)

HOME with Ema Yuasa



Ema Yuasa. Photo: Tomoko Mukaiyama

Finally, we're happy to announce the performance dates for a brand new project called HOME. The idea of home is much more complex than the one you find in storybooks. A home is a safe haven, but it's also the site of many traumas and abuses. A home isolates you from people, but it also brings you closer to family members. A home gives you the stability you need to travel, but it's also a trap.

Our HOME will be set in an actual house on the boarder of the Noorderplantsoen. The rooms will be filled with music, video, photographs, and movement provided by Ema Yuasa. Since her departure from the famed Netherlands Dans Theater, Yuasa has been exploring new directions in performance. Her incredible technical skill is matched by her nuanced acting, and she'll use both to animate the paradoxical nature of the notion of "home."

18-25 AUG – **HOME** – [Noorderzon Festival](#), Groningen (NL)
24 SEP-11 DEC – **HOME** – [Saitama Triennale](#), Saitama (JP)

Tomoko Mukaiyama / 向井山朋子



[Instagram](#)

[forward this email to a friend](#) [Unsubscribe](#).

Tomoko Mukaiyama Foundation
P.O. Box 16941
1001 RK Amsterdam, The Netherlands
contact management: info@tomoko.nl
www.tomoko.nl | www.wasted.nl